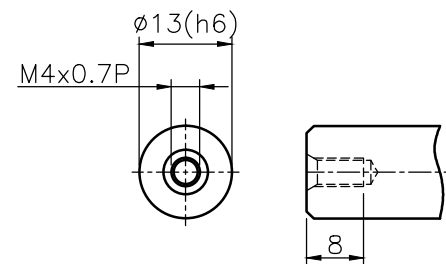


Shaft Option 1(K)



Shaft Option 2(S)

Inertia: 0.01-0.02kg*cm²

Mass: ≈ 0.5 kg

Shaft Option S : Smooth output shaft(Standard)

Shaft Option K : Output shaft with keyway

Standard Backlash ≤ 8 arcmin

Bushing Supplied, when the motor shaft Dia. is small than $\phi 8$ (Input Shaft Dia.)

General Tolerance		
6- 50 mm	± 0.1	
50- 120 mm	± 0.2	
120- 315 mm	± 0.3	
315- 1000 mm	± 0.5	



科駿精密工業股份有限公司

KOJIN PRECISION INDUSTRIAL CO., LTD.

TEL: 04-22798586 FAX: 04-22798453

圖號	MF40X-L1		
圖名	組合圖 $\square 30$ -PCD $\square 45$ -M3		
比例	1 : 1	版次	A

Name	Date	設計	B
Drawing		設計	C
Check		變更	D
Approv.		變更	E